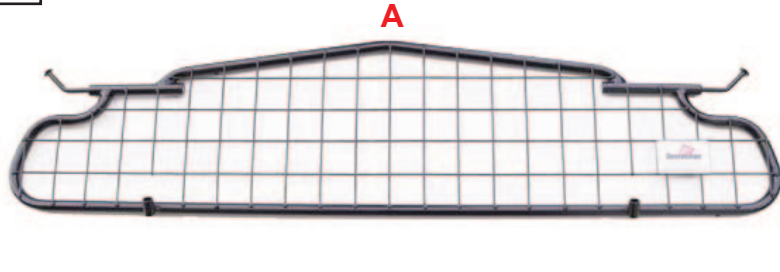


**KIT**



**B** x2  
440mm



**C** x2

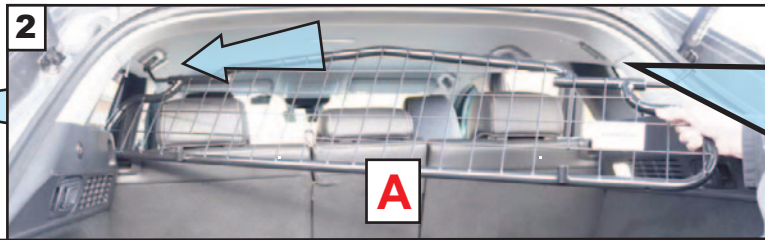
**READ FULLY BEFORE BEGINNING - IT'LL MAKE MORE SENSE!**  
**VOR DEM ANFANG VOLLSTÄNDIG LESEN - ES WIRD MEHR SINN MACHEN!**



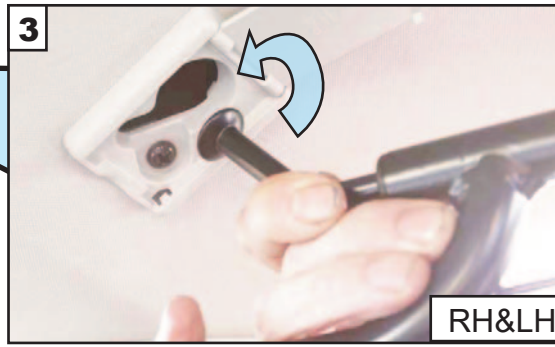
**MAZDA CX-60 (2022~Onwards) G1677**




**1**  
Offer in the Dog Guard - the mesh goes to Back of Car.  
The badge faces to the rear of the car.

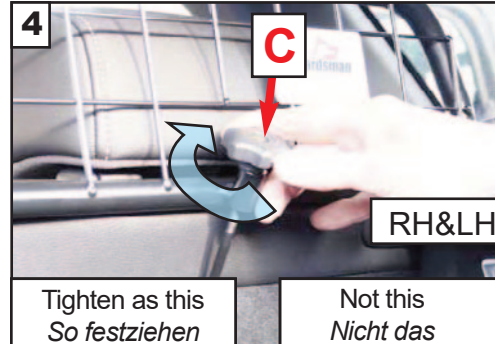
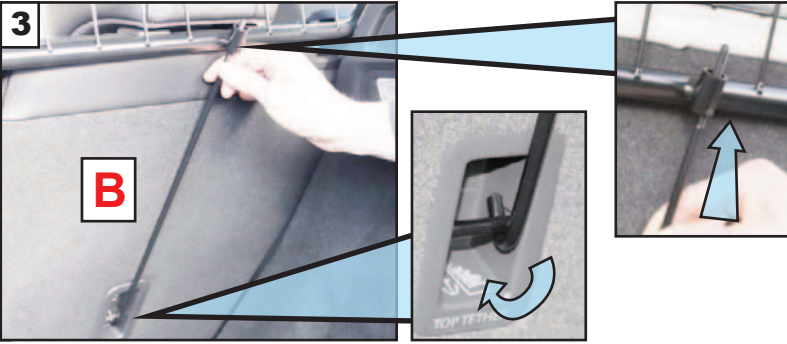


**2**  
*Angebot im Hundegitter – das Netz geht an die Rückseite des Autos.  
Die Plakette zeigt zum Heck des Autos*



**RH&LH**

  
Set the seat backrest to the second position.  
*Stellen Sie die Rückenlehne des Sitzes in die zweite Position*

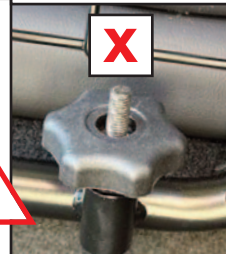


**4**  
Tighten as this  
*So festziehen*

Not this  
*Nicht das*



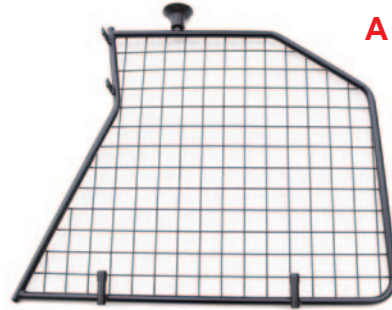
**G1677 + G1677D**



- DOG GUARD FITTING INSTRUCTION**
- HUNDESCHUTZGITTER EINBAUANLEITUNG**
- PROTECTION CONTRE LES CHIENS INSTRUCTIONS DE MONTAGE**
- HUNDEGITTER MONTERINGSVEJLEDNING**
- CONJUNTO PROTECTOR PARA PERROS INSTRUCCIONES DE MONTAJE**
- KIT BARRIERA CANI ISTRUZIONI DI MONTAGGIO**
- HUNDEVERNGITTER MONTASJEVEILEDNING**
- HONDENBESCHERMINGSREK INBOUWINSTRUKTIES**
- SATS HUNDSKYDD MONTERINGSANVISNING**
- KOIRAN TURVARISTIKKO ASENNUSOHJEET**

[www.guardsmanguardguards.co.uk](http://www.guardsmanguardguards.co.uk)



**KIT**

READ FULLY  
BEFORE BEGINNING -  
IT'LL MAKE MORE  
SENSE!

VOR DEM ANFANG  
VOLLSTÄNDIG LESEN  
- ES WIRD MEHR  
SINN MACHEN!



**MAZDA CX-60**  
(2022~Onwards)  
G1677D

**VARIABLE BOOT DIVIDER**  
FITTING INSTRUCTION

CAN ONLY BE USED IN  
CONJUNCTION WITH  
'GUARDSMAN'  
**MAZDA CX-60**  
**Dog Guard**  
(2022~Onwards)  
G1677D

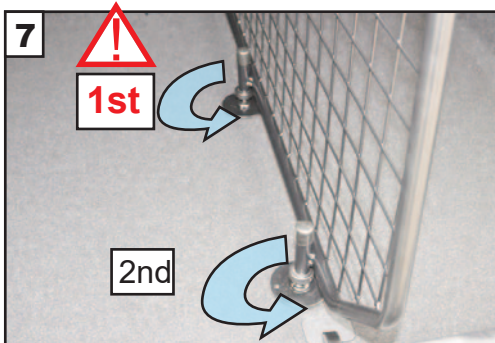
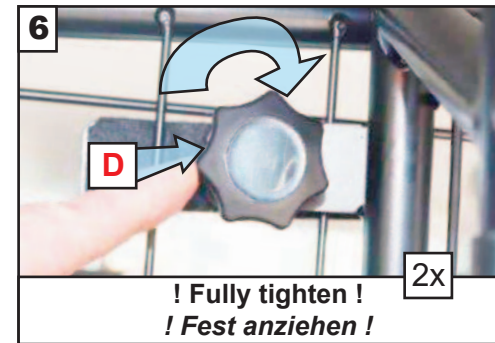
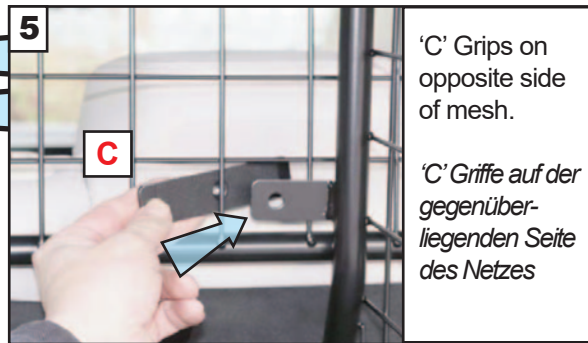
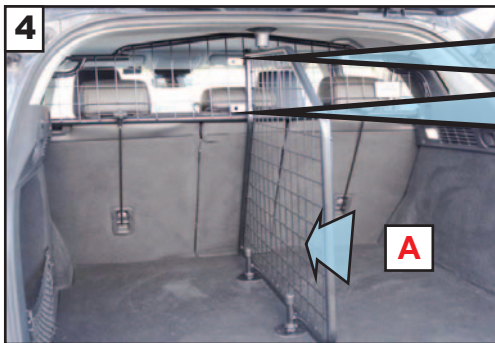
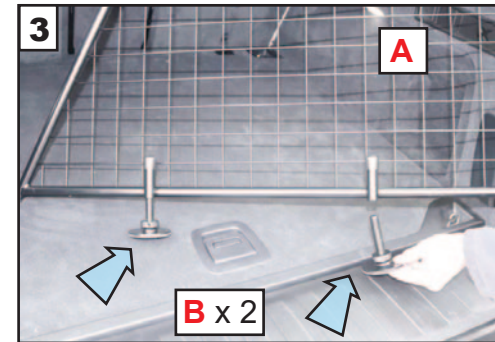
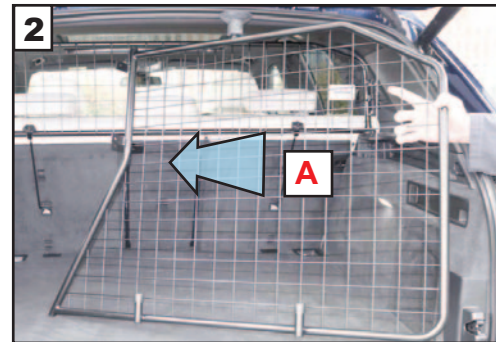
**VARIABLER**  
**KOFFERRAUMTEILER**  
MONTAGEANLEITUNG

KANN NUR IN VERBINDUNG  
MIT VERWENDET WERDEN  
'GUARDSMAN'  
**MAZDA CX-60**  
**Hundegitter**  
(ab 2022)  
G1677D

[www.guardspandogguards.co.uk](http://www.guardspandogguards.co.uk)



G1677D v.1 3/24



Regularly check  
tightness of all fixings.



Prüfen Sie regelmäßig die  
Festigkeit aller Befestigungen