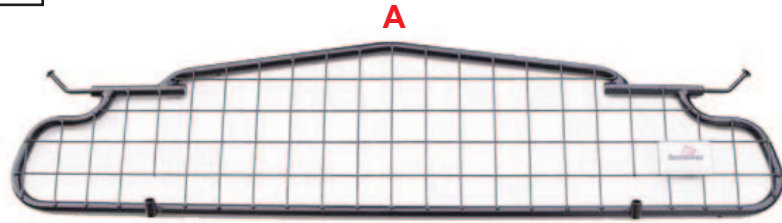
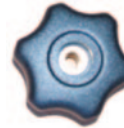


**KIT**



**A**

**B** x2  
440mm



**C** x2

**READ FULLY BEFORE BEGINNING - IT'LL MAKE MORE SENSE!**

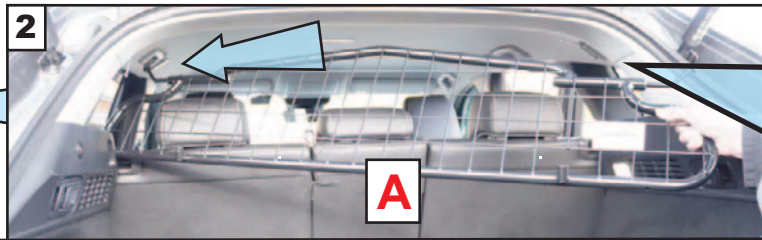
**VOR DEM ANFANG VOLLSTÄNDIG LESEN - ES WIRD MEHR SINN MACHEN!**



**MAZDA CX-60  
(2022~Onwards)  
G1677**

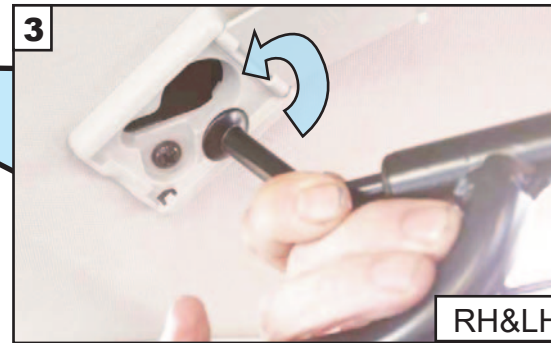


**1**  
Offer in the Dog Guard - the mesh goes to Back of Car.  
The badge faces to the rear of the car.




**A**

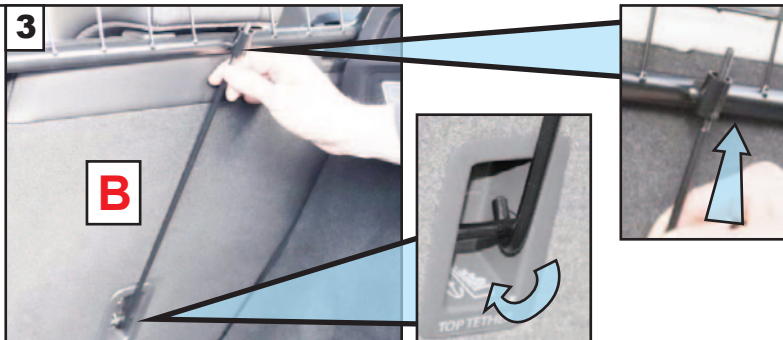
*Angebot im Hundegitter – das Netz geht an die Rückseite des Autos.  
Die Plakette zeigt zum Heck des Autos*



**3**

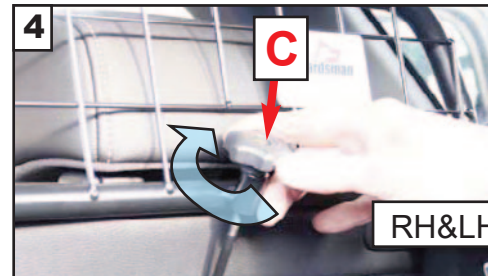
**RH&LH**

  
Set the seat backrest to the second position.  
*Stellen Sie die Rückenlehne des Sitzes in die zweite Position*



**3**

**B**



**4**

**C**

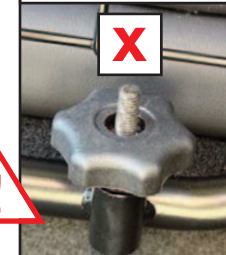
**RH&LH**

Tighten as this  
*So festziehen*

Not this  
*Nicht das*



**G1677 + G1677D**



- DOG GUARD**  
FITTING INSTRUCTION
- HUNDESCHUTZGITTER**  
EINBAUANLEITUNG
- PROTECTION CONTRE LES CHIENS**  
INSTRUCTIONS DE MONTAGE
- HUNDEGITTER**  
MONTERINGSVEJLEDNING
- CONJUNTO PROTECTOR PARA PERROS**  
INSTRUCCIONES DE MONTAJE
- KIT BARRIERA CANI**  
ISTRUZIONI DI MONTAGGIO
- HUNDEVERNGITTER**  
MONTASJEVEILEDNING
- HONDENBESCHERMINGSREK**  
INBOUWINSTRUKTIES
- SATS HUNDSKYDD**  
MONTERINGSANVISNING
- KOIRAN TURVARISTIKKO**  
ASENNUSOHJEET

[www.guardsmanguardguards.co.uk](http://www.guardsmanguardguards.co.uk)

