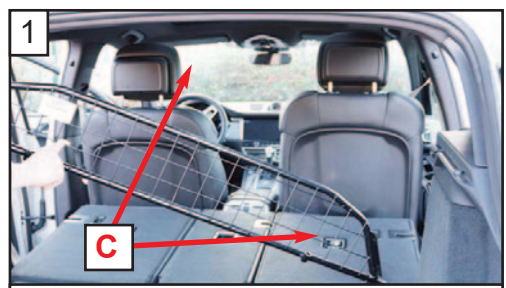
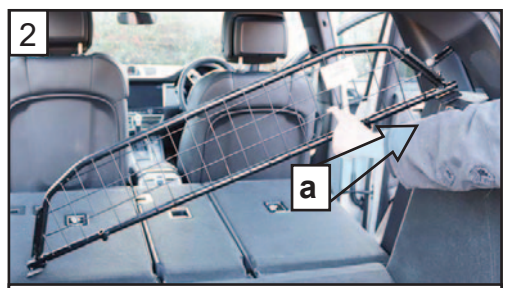




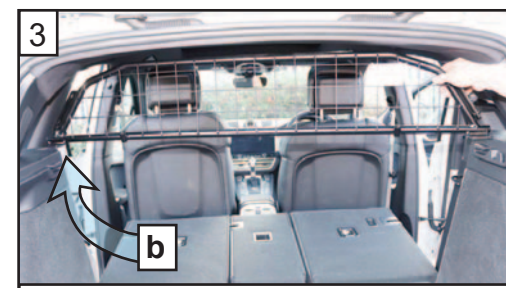
**Porsche Macan #1
(2014 onwards)
G1618**



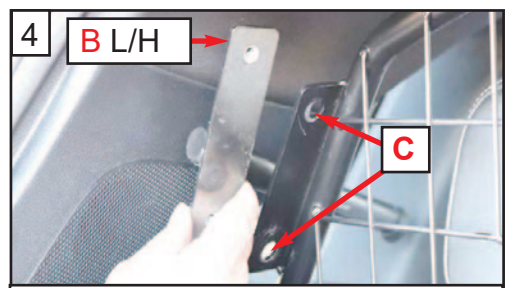
1 Hold side arm 'B Right hand' in position. Insert Bolts 'C'



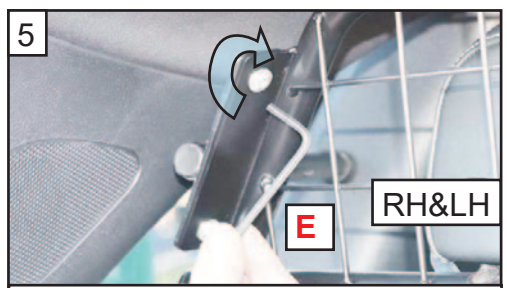
2 Drop the rear seats. Offer the Guard into position Right hand side first.



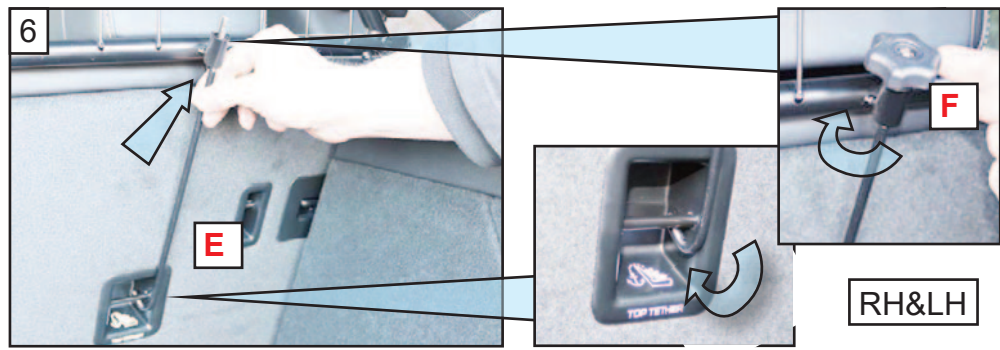
3 Then swing the Left hand side up and onto the Left hand side Trim



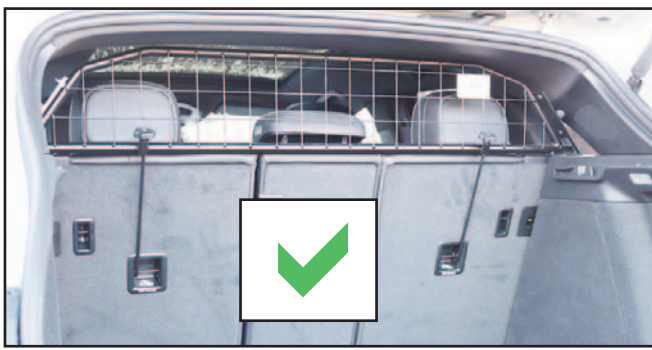
4 Hold side arm 'B Left hand' in position so the front rests on the pillar. Insert Bolts 'C'



5 Use the Allen Key 'E' to tighten the four bolts 'C' on both side arms.



6



- DOG GUARD**
FITTING INSTRUCTION
- HUNDESCHUTZGITTER**
EINBAUANLEITUNG
- PROTECTION CONTRE LES CHIENS**
INSTRUCTIONS DE MONTAGE
- HUNDEGITTER**
MONTERINGSVEJLEDNING
- CONJUNTO PROTECTOR PARA PERROS**
INSTRUCCIONES DE MONTAJE
- KIT BARRIERA CANI**
ISTRUZIONI DI MONTAGGIO
- HUNDEVERNGITTER**
MONTASJEVEILEDNING
- HONDENBESCHERMINGSREK**
INBOUWINSTRUKTIES
- SATS HUNDSKYDD**
MONTERINGSANVISNING
- KOIRAN TURVARISTIKKO**
ASENNUSOHJEET



tel no. +44 (0)1827 713040
www.guardsmandogguards.co.uk

G1618 is2 - 10/24