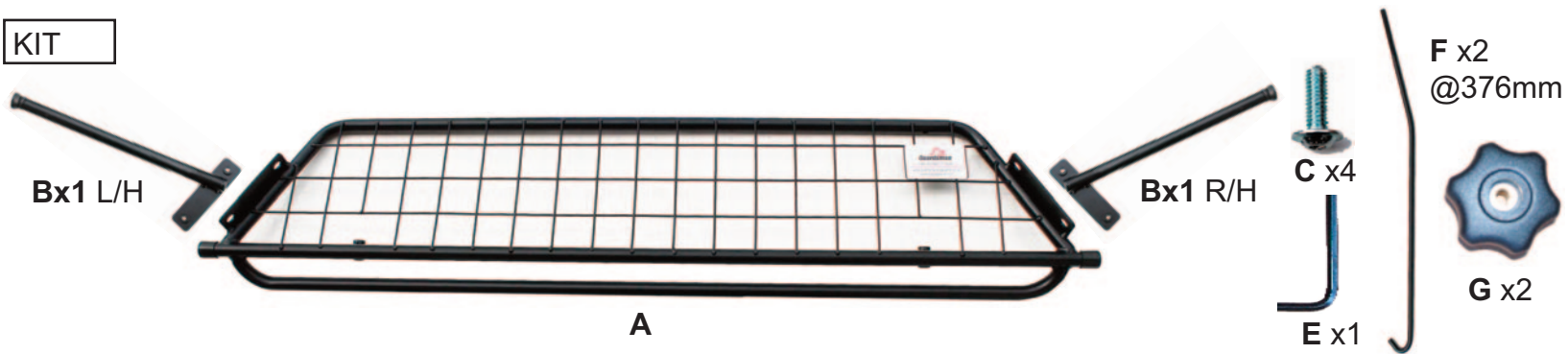
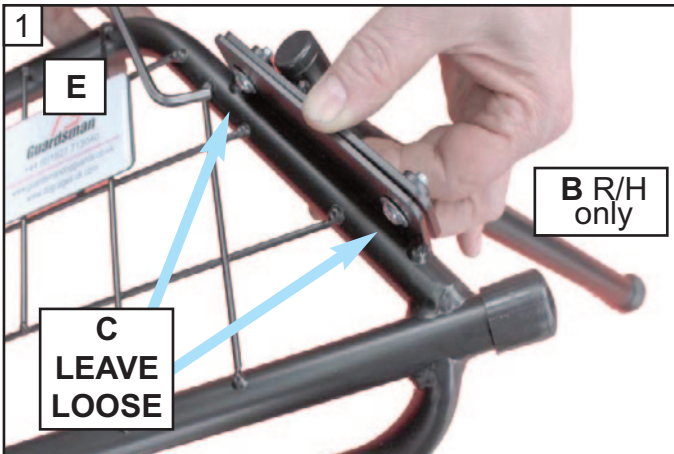


KIT

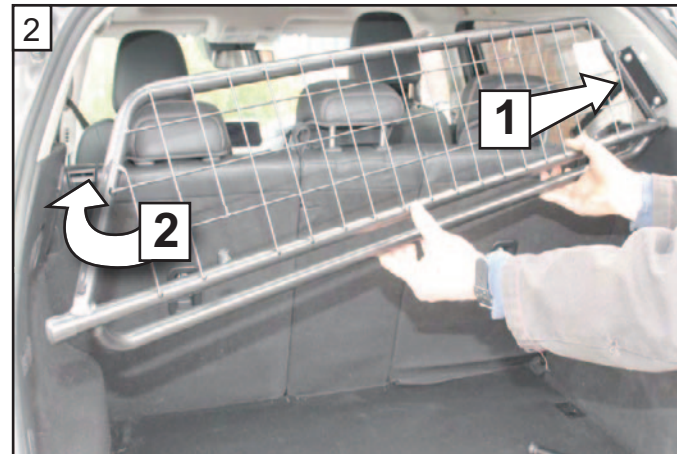


**Mazda Cx-5
2017 Onwards
G1510**

**DOG GUARD
FITTING INSTRUCTION**
**HUNDESCHUTZGITTER
EINBAUANLEITUNG**
**PROTECTION CONTRE LES CHIENS
INSTRUCTIONS DE MONTAGE**
**HUNDEGITTER
MONTERINGSVEJLEDNING**
**CONJUNTO PROTECTOR
PARA PERROS
INSTRUCCIONES DE MONTAJE**



Fix the Right Hand Side Arm (B) to the Dog Guard. Use the allen Key (E) with Bolts (C). Do Not Fully tighten



Insert the Dog Guard Right Side first then manouvre the left hand side in. The mesh goes to the back of the car



Manouvre the Dog Guard into the correct position behind the rear seats



Position the Left Hand Side Arm on the outside of the Dog Guard.

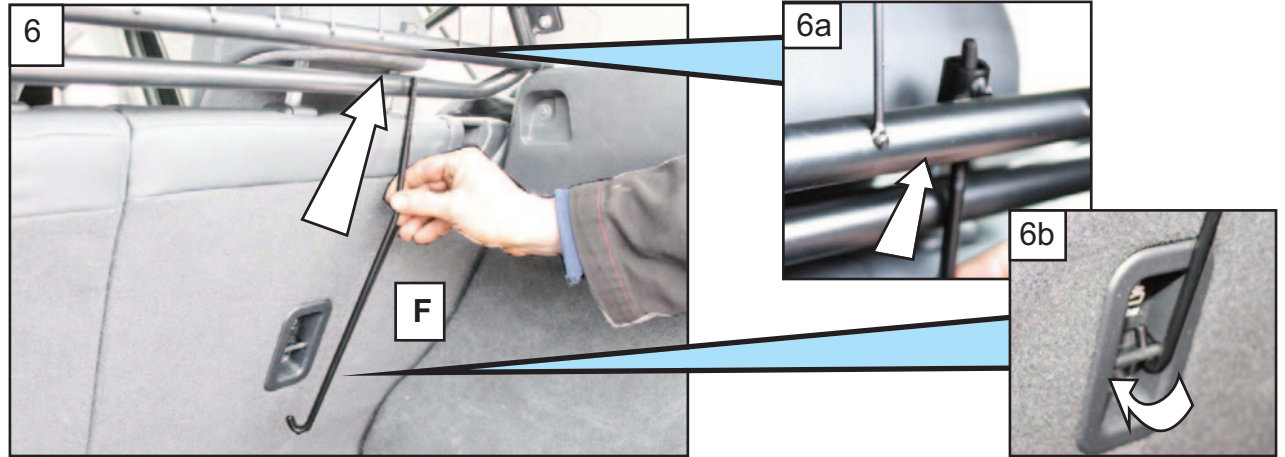


www.guardsmantogguards.co.uk

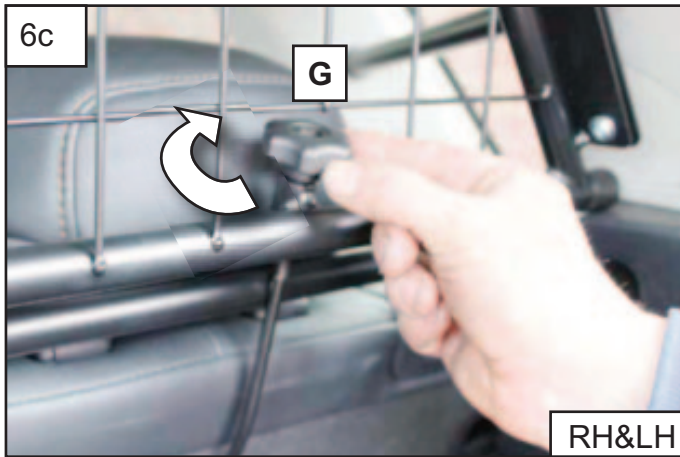
G1510 is1 - 7/18 is 2 1/20



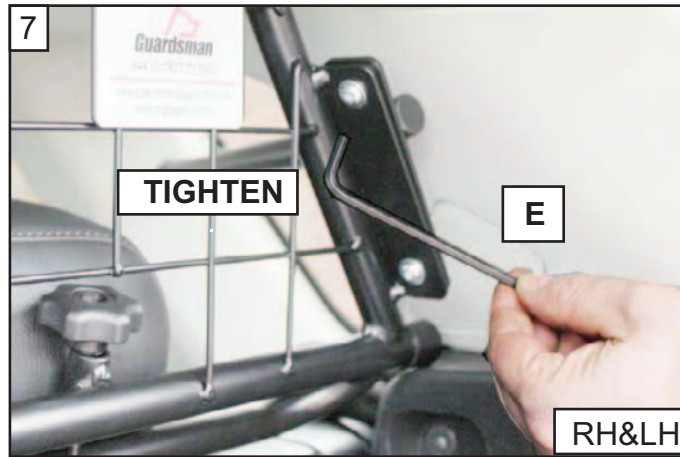
5
Position the Left Hand Side Arm (B) on the outside of the Dog Guard - Fix with the Bolts (C). Do not fully tighten



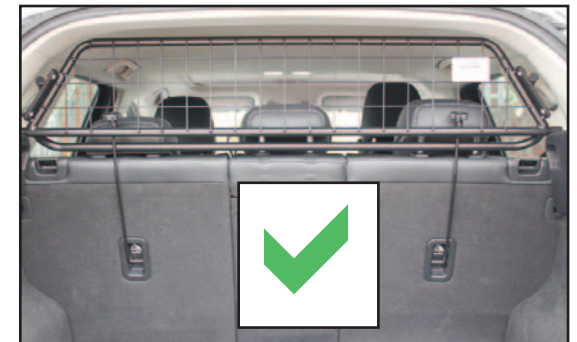
6
Take the securing Bar F and put it through the tubular guide in the lower rail of the Dog Guard. Then hook the securing Bar under the Child Seat Tether



6c
Partially secure with the Handwheels (G) to hold the Dog Guard in place.
RH&LH



7
Make sure the Dog Guard is centred and tighten the side arms. If You are fitting a Boot Divider do it now
RH&LH



Finally tighten the Handwheels (G) evenly both sides