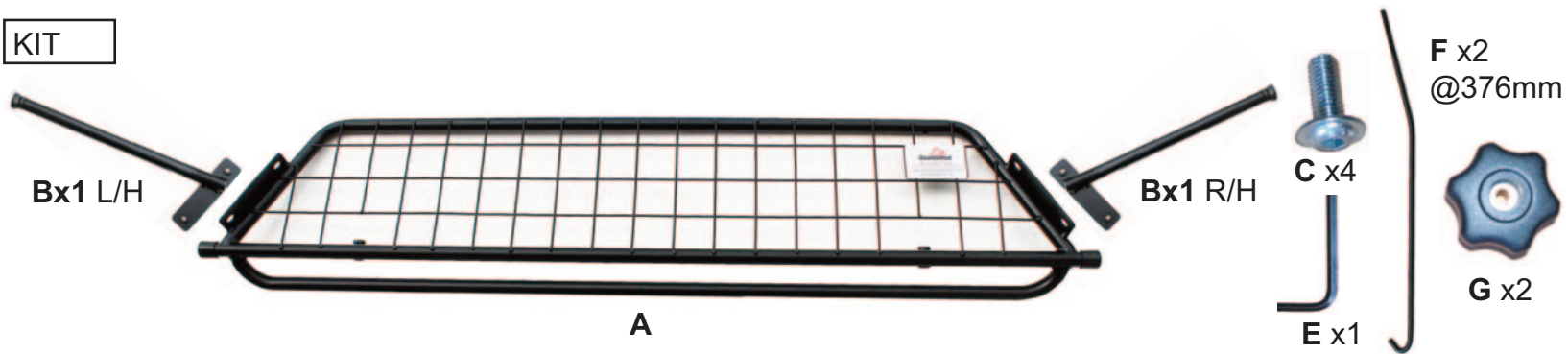
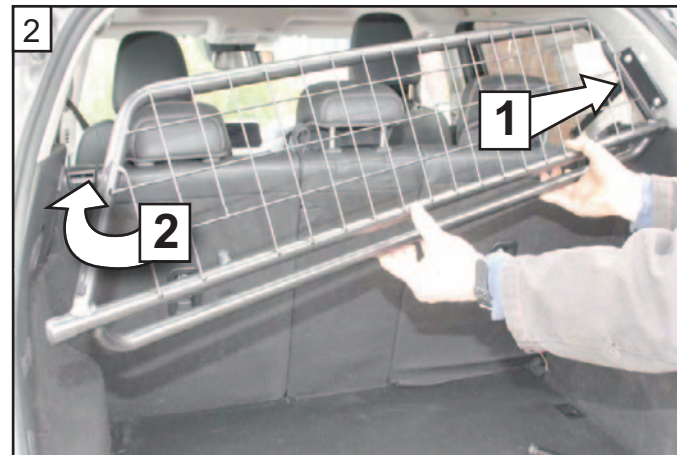
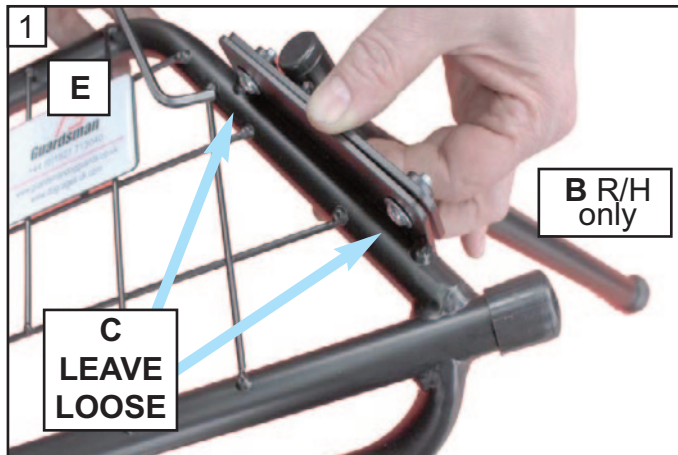


KIT



**Mazda Cx-5  
2017 Onwards  
G1510**

**DOG GUARD  
FITTING INSTRUCTION**  
**HUNDESCHUTZGITTER  
EINBAUANLEITUNG**  
**PROTECTION CONTRE LES CHIENS  
INSTRUCTIONS DE MONTAGE**  
**HUNDEGITTER  
MONTERINGSVEJLEDNING**  
**CONJUNTO PROTECTOR  
PARA PERROS  
INSTRUCCIONES DE MONTAJE**



Fix the Right Hand Side Arm (B) to the Dog Guard. Use the allen Key (E) with Bolts (C). Do Not Fully tighten

Insert the Dog Guard Right Side first then manouvre the left hand side in. The mesh goes to the back of the car



Manouvre the Dog Guard into the correct position behind the rear seats



Position the Left Hand Side Arm on the outside of the Dog Guard.

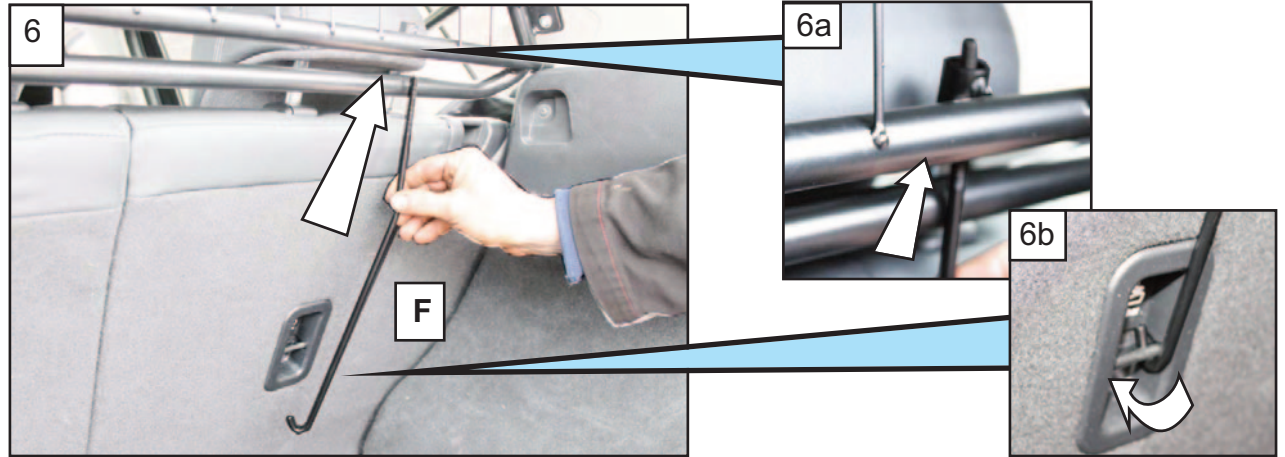


[www.guardsmandogguards.co.uk](http://www.guardsmandogguards.co.uk)

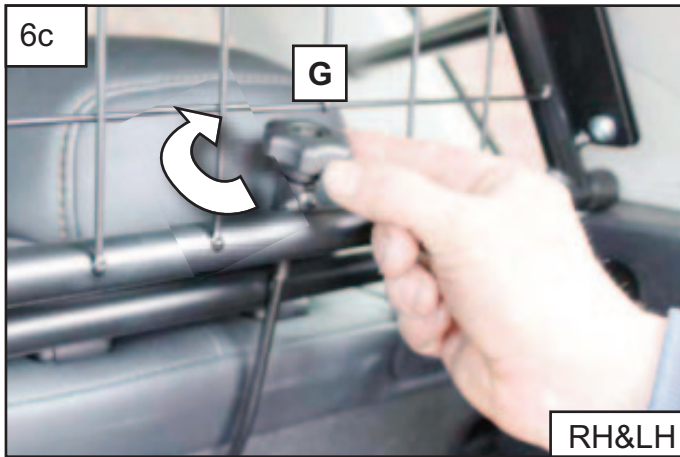
G1510 is1 - 7/18 is 2 1/20



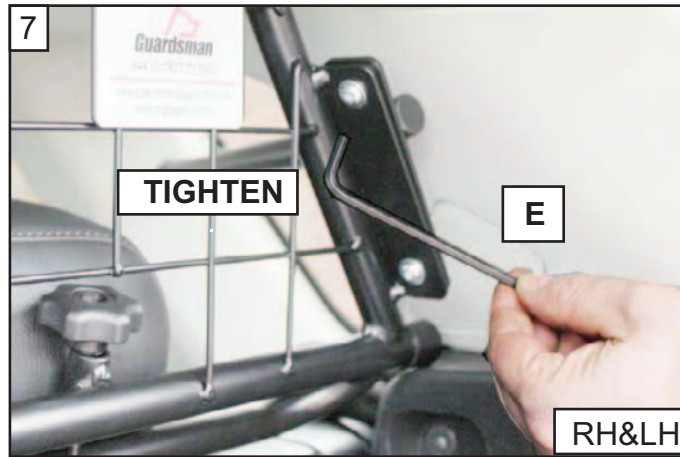
5  
Position the Left Hand Side Arm (B) on the outside of the Dog Guard - Fix with the Bolts (C). Do not fully tighten



6  
Take the securing Bar F and put it through the tubular guide in the lower rail of the Dog Guard. Then hook the securing Bar under the Child Seat Tether



6c  
Partially secure with the Handwheels (G) to hold the Dog Guard in place. If You are fitting a Boot Divider do it now.



7  
Make sure the Dog Guard is centred and tighten the side arms. Finally tighten the Handwheels (G) evenly both sides

